

SINGLE BAG HOUSING







The GPS bag housings are designed to accommodate N.1 filter bags.

Our range of bag filters unlike other similar products on the market, ensures complete separation between the dirt chamber and the clean chamber, as the bag collar seat is made on a flange obtained by mechanical machining.

Our GPS bag filters are manufactured in accordance with our high quality standards and in accordance with PED 97/23 / CE and the most common international standards.

The GPS filters are mechanically cleaned and subsequently electro-polished to provide a surface finish suitable for the food and pharmaceutical field. Upon request they can be supplied with mechanical polishing or pickling only for industrial use.

Our GPS can be equipped with a V-CLAMP quick opening, which ensures easy and fast maintenance. On request, for more demanding applications, the version with flanged closure and terminals can be provided.

OIL & GAS	CHEMICAL & PETROLCHEMICAL	WATER TREATMENT	ENERGY	FOOD & PHARMA	INDUSTRIAL
					

Applications

Oil & Gas

- Refinery Process Fluids

Chemical & Petrolchemical

- Process Fluids • Solvent

Water Treatment

- Pre-filtration • Industrial Process Water Filtration • Softening System Protection

Power Generation

- Process Fluids • Gas Separation & Treatment • Water Treatment

Food & Farma

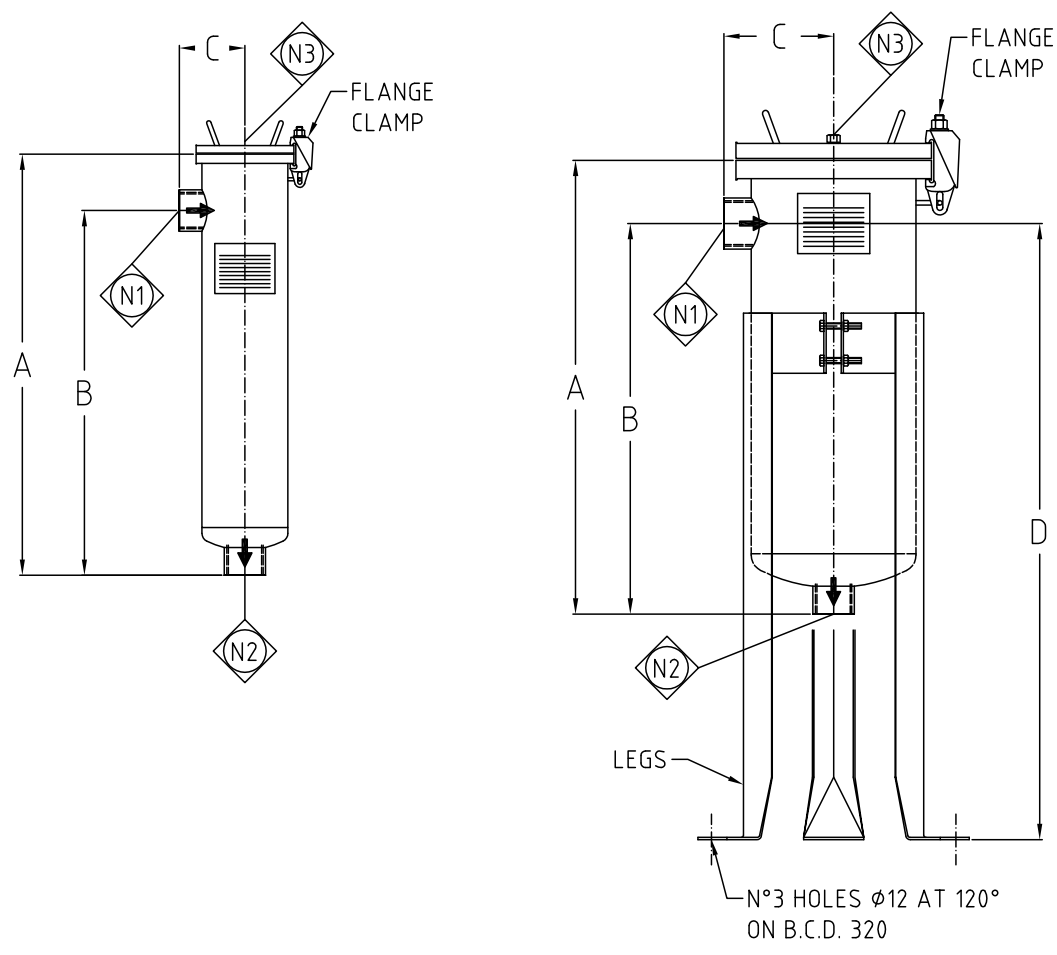
- Cosmetic • Pre-Prefiltration • Dairy • Chocolate

Industrial

- Paints And Inks Production • Cataforesi • Mechanic Industry • Paper Mills • Textile Industry



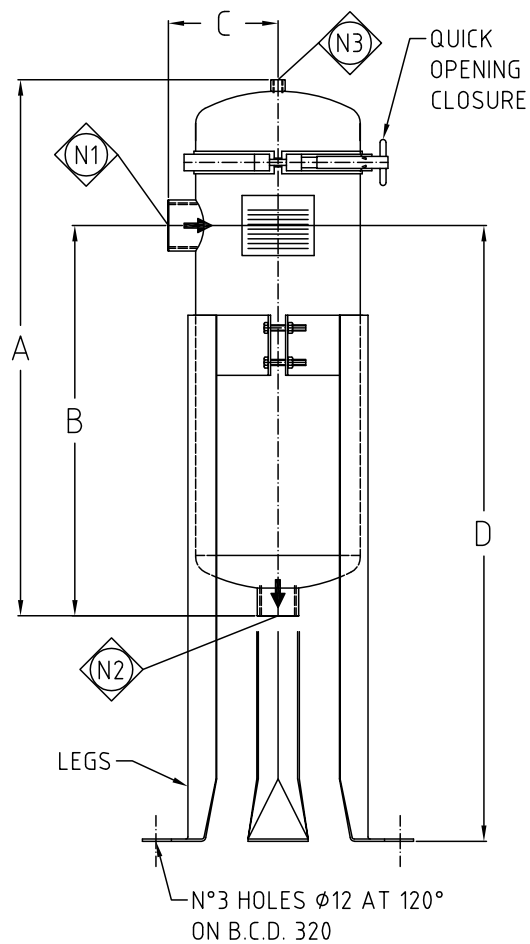
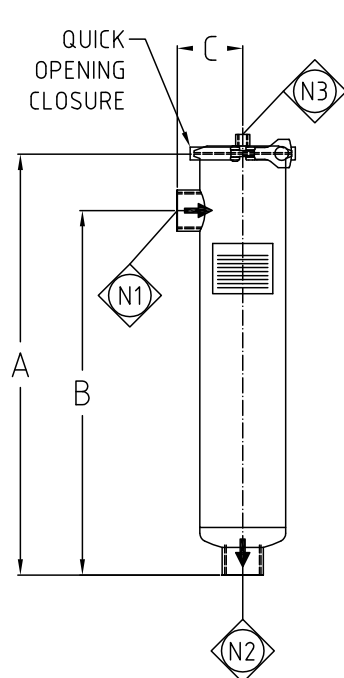
GPS bolts rathman type series:



MODEL	N° of bags	Bag Size	VOLUME Lt	Max Operating Press. (PS)	Dimensions (mm)				Connections		Flow rate mc/h	Weight kg	Liquid group 2 with vapour press. < 0.5 bar
					A	B	C	D	N1-N2	N3			
GPS3-M	1	3	4	10 bar @ 100° C	385	310	95	-	1-1/2" GAS-F	1/4" GAS-F	6	5	Art. 4 Par. 3
GPS4-M	1	4	5		515	440	95	-	1-1/2" GAS-F		12	6	
GPS1-M	1	1	22		630	515	155	750 to 1025	2" GAS-F		20	22	
GPS2-M	1	2	34		970	855	155	980 to 1350	2" GAS-F		30	34	

* Material AISI 316 / L for all model - Material AISI 304 for GPS1 & GPS2

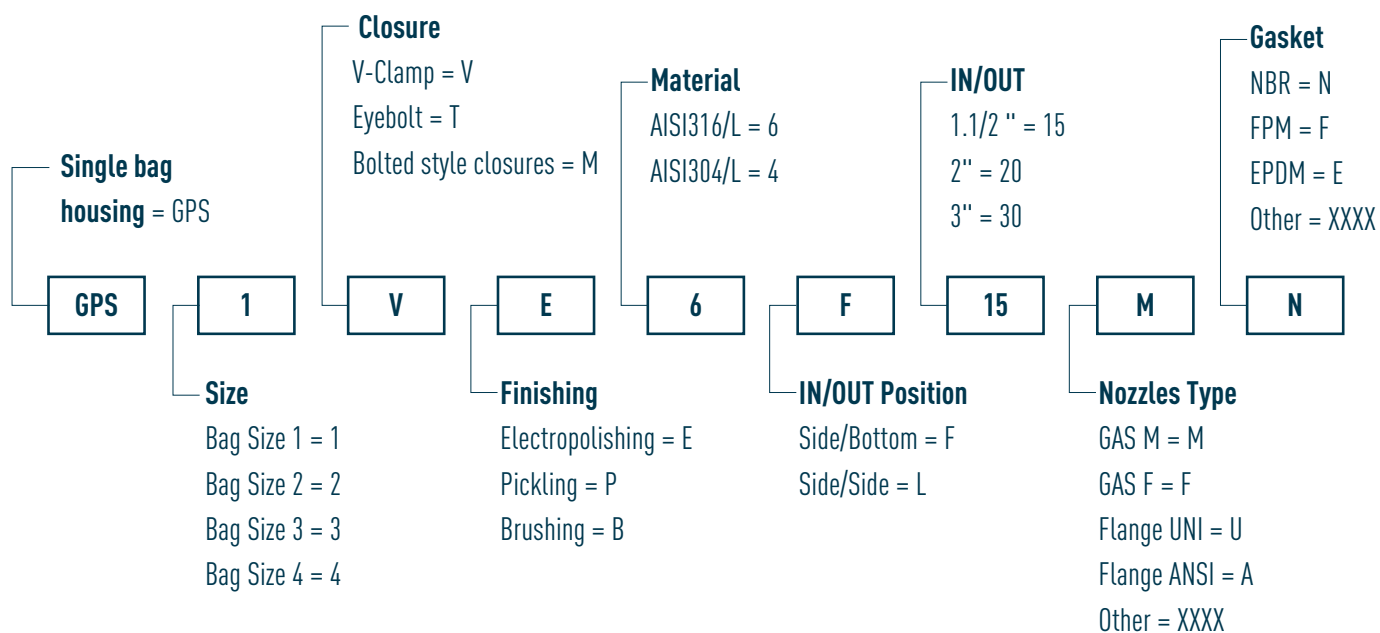
GPS V CLAMP series



MODEL	N° of bags	Bag Size	VOLUME Lt	Max Operating Press. (PS)	Dimensions (mm)				Connections		Flow rate mc/h	Weight kg	Liquid group 2 with vapour press. < 0.5 bar
					A	B	C	D	N1-N2	N3			
GPS3	1	3	3,15	9 bar	370	310	95	-	1-1/2" GAS-F	1/4" GAS-F	6	3	
GPS4	1	4	4,45	@ 60° C	500	440	95	-			12	4	
GPS1	1	1	22	8 bar	705	515	155	750 to 1025	2" GAS-F		20	25	
GPS2	1	2	34	@ 60° C	1050	855	155	980 to 1350			30	30	

* Material AISI 316 / L for all model - Material AISI 304 for GPS1 & GPS2

Ordering Info



* Contact GV Filtri for more information about Materials and Dimensions availability