







# TEMPORARY CONYCAL STRAINER

For more than thirty years GV Filtri produce temporary filters that are installed all around the world with the purpose to protect high value components.

Temporary GVTH cone filters are designed and manufactured in accordance with the most common and strict industrial standards and using high quality raw materials.

The cone and ring dimensions are such that they are compatible with ASME / ANSI B16.5 flanges.

The GVTH cone filters have been dimensioned in accordance with the thirty-year experience of "GV Filtri Industriali" and on the basis of internally developed computing sheets, GV can dimension special temporary filters on request to meet any customer application.

OIL & GAS	CHEMICAL & PETROLCHEMICAL	WATER TREATMENT	ENERGY	FOOD & PHARMA	INDUSTRIAL
					

## Applications

### Oil & Gas

- Refinery Process Fluids

### Chemical & Petrolchemical

- Process Fluids

### Water Treatment

- Pre-filtration

### Power Generation

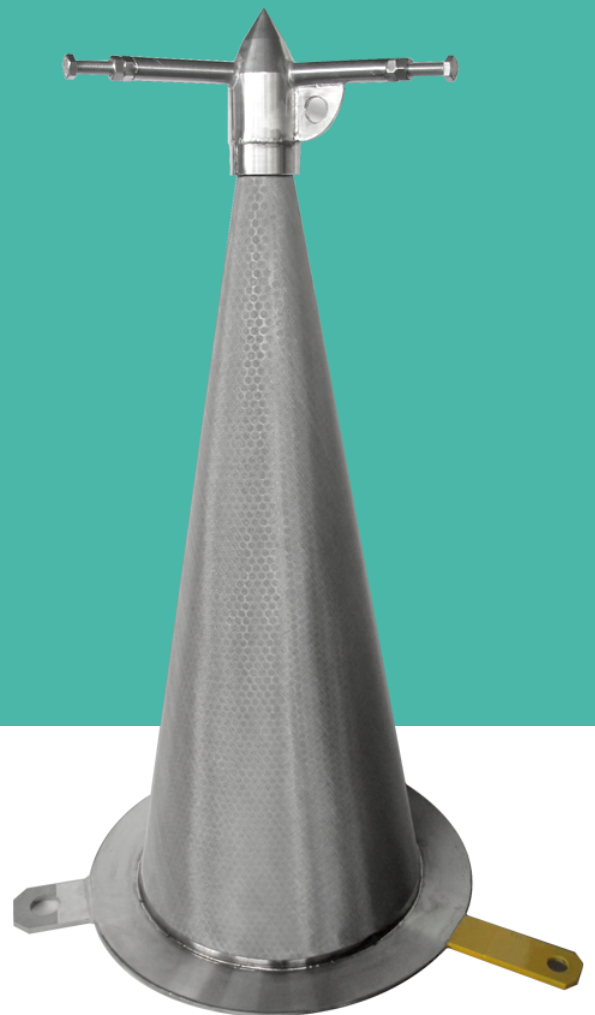
- Process Fluids • Gas Separation • Water Treatment

### Food & Farma

- Fermentation • Cosmetic • Pre-filtration • Dairy

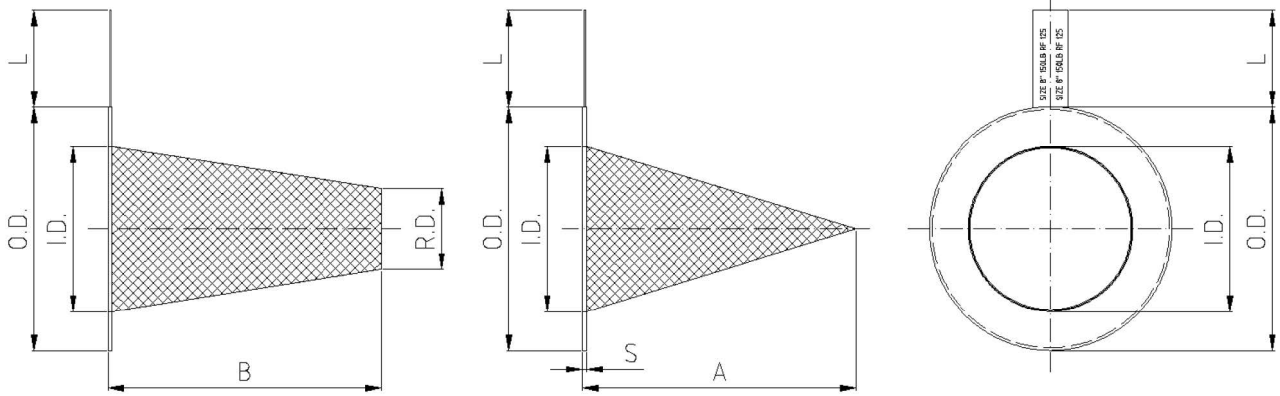
### Industrial

- Iron & Steel • Paints And Inks Production • Mechanic Industry • Paper Mills • Textile Industry



---

- 

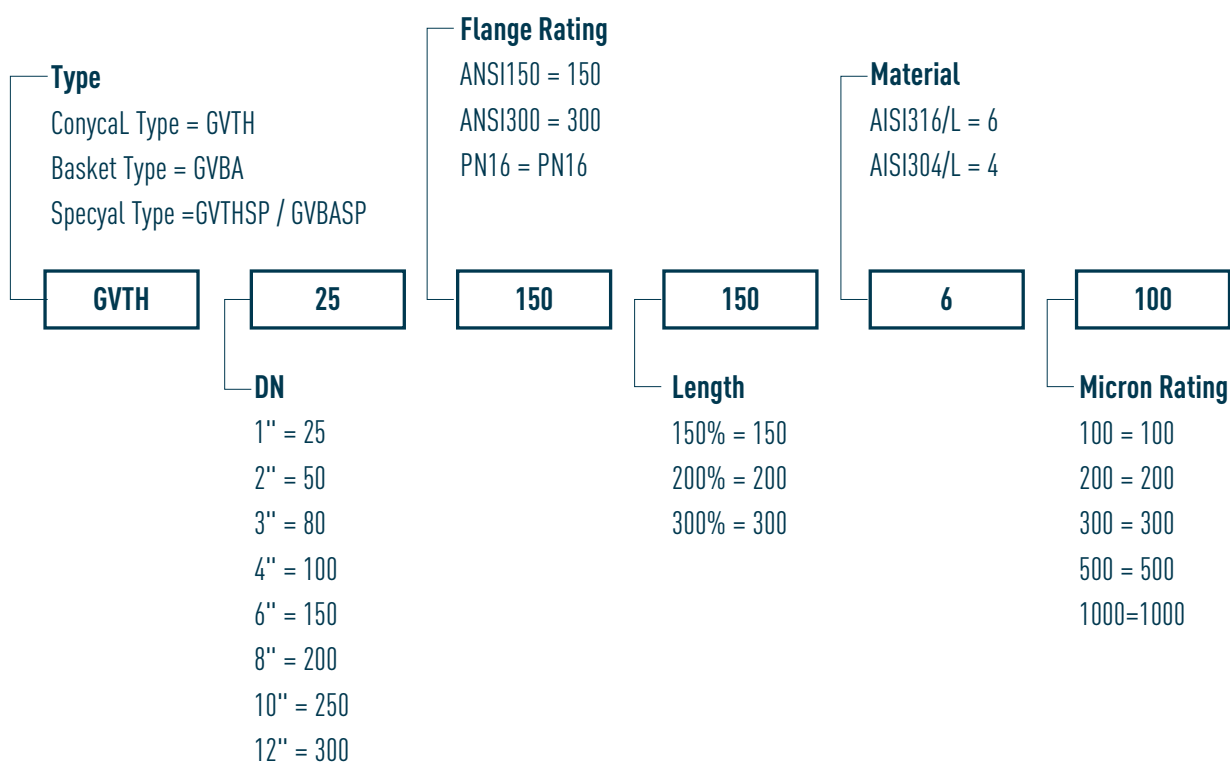


SIZE	O.D. (mm)				I.D.	R.D.	B				A				S	KG
	150-300	600	900	1500			100%	150%	200%	300%	100%	150%	200%	300%		
3/4"	55	64	67	67	16	8	20	30	40	60	30	45	60	90	3	0.2
1"	64	70	75	75	20	10	30	45	60	90	45	65	85	130	3	0
1 1/2"	82	92	95	95	33	16	40	60	80	115	60	90	115	180	3	0.3
2"	102	108	140	140	44	20	55	80	105	160	80	120	160	240	3	0.35
2 1/2"	120	127	162	162	58	30	60	90	115	175	85	130	180	260	3	0.5
3"	133	145	165	170	70	35	75	110	150	220	105	160	220	330	3	0.6
4"	170	190	203	205	95	45	90	140	185	280	140	210	280	440	3	1
5"	195	238	245	250	118	60	120	175	235	360	170	260	360	540	3	1
6"	220	263	285	280	138	70	150	220	290	440	210	330	440	670	3	1.5
8"	275	318	355	350	188	90	180	280	390	570	260	410	570	850	3	2.5
10"	337	397	432	432	238	120	220	360	460	690	330	510	700	1020	3	3.5
12"	405	455	495	517	285	140	270	440	560	850	410	620	850	1250	5	5
14"	440	483	517	575	314	155	300	460	610	920	440	690	920	1400	5	5.5
16"	510	555	572	638	358	125	360	550	720	1080	510	800	1050	1600	5	7.5
18"	540	603	635	702	405	200	410	610	820	1200	600	900	1200	1800	5	10
20"	597	675	695	753	450	225	440	700	900	1350	650	1000	1350	2000	5	12
24"	708	785	835	900	542	270	540	820	1800	1650	770	1200	1600	2500	5	14
> 24"	Dimensions On Request															

## Notes

- Internal diameter ID is verified for piping having a maximum thickness of schedule 80.
- Dimensions are approximate.
- Face finish 250 AARH.
- Standard flow direction is from outside to inside; opposite direction to be requested.
- Strainer must be installed as closed as possible to the component to be protected.
- Additional filtration layers (all filtration degree could be considered).
- Special flange dimensions, finishing and shapes.
- Customized sizing for high flow rate, viscosity or special applications. Please contact our technical department for a customized sizing.

## Ordering Info



\* Contact **GV Filtri** for more information about Materials and Dimensions availability